



**FRED REINFELD CHESS CLASSICS** Peter Kurzdorfer, General Editor

# **ATTACK & COUNTERATTACK IN CHESS**

**Fred Reinfeld**

**21<sup>st</sup> Century Edition**



# **Attack and Counterattack in Chess**

**Fred Reinfeld**

*21st Century Edition*

*Fred Reinfeld Chess Classics*  
**Peter Kurzdorfer, General Editor**



2019  
Russell Enterprises,  
Inc. Milford, CT USA

Attack and Counterattack in Chess  
by Fred Reinfeld

Fred Reinfeld Chess Classics  
Peter Kurzdorfer, General Editor

ISBN: 978-1-941270-63-2 (print)  
ISBN: 978-1-941270-63-9 (eBook)

© Copyright 2019  
Don Reinfeld and Judith Reinfeld

All Rights Reserved

No part of this book may be used, reproduced, stored in a retrieval system or transmitted in any manner or form whatsoever or by any means, electronic, electrostatic, magnetic tape, photocopying, recording or otherwise, without the express written permission from the publisher except in the case of brief quotations embodied in critical articles or reviews.

Published by:  
Russell Enterprises, Inc.  
P.O. Box 3131  
Milford, CT 06460 USA

Editing and proofreading by Peter Kurzdorfer  
Cover by Janel Lowrance

Printed in the United States of America



## Table of Contents

About the Author	4
From the Editor	6
<b>Part I</b>	
<i>White's Point of View</i>	
<b>Chapter 1</b> How to Control the Center	8
<b>Chapter 2</b> How to Exploit Superior Mobility	13
<b>Chapter 3</b> How to Exploit Black's Premature Opening Up of the Position	18
<b>Chapter 4</b> How to Exploit Black's Premature Counterattack	25
<b>Chapter 5</b> How to Exploit Black's Weakening Pawn Moves	29
<b>Chapter 6</b> How to Exploit Black's Errors of Judgment	37
<b>Chapter 7</b> How to Exploit Irregular Defenses	43

## **Part II**

### ***Black's Point of View***

<b>Chapter 8</b>	
<b>How to Seize the Initiative</b>	<b>50</b>
<b>Chapter 9</b>	
<b>How to Play against Gambits</b>	<b>57</b>
<b>Chapter 10</b>	
<b>How to Defend Against a Powerful Attack</b>	<b>66</b>
<b>Chapter 11</b>	
<b>How to Seize the Attack</b>	<b>77</b>
<b>Chapter 12</b>	
<b>How to Exploit Unusual Openings</b>	<b>79</b>
<b>Editor's Notes</b>	<b>86</b>

## Chapter 3

### How to Exploit Black's Premature Opening Up of the Position

The bane of many chess books is that they ignore the human factor. You may have read the last paragraphs of the previous chapter with some skepticism. Suppose Black is not satisfied to be trussed up; suppose he fights back? How does White proceed in such cases?

We can approach the problem of cramped positions systematically by dividing such positions into three parts. Those positions in which Black defends passively without any attempt to fight back have been treated in the previous chapter. Positions in which Black tries to open up the position are the subject of the present chapter. Positions in which Black resorts to counterattack will be the subject matter of Chapter Four.

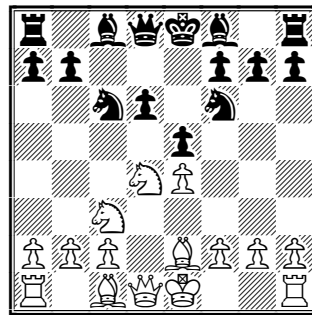
We start with a game in which Black is so anxious to avoid a cramped position that he opens up the game before castling. This transfers the struggle from a predominantly *strategical* one to a predominantly *tactical* one. The switch, as we shall see, favors White.

#### White – Black Sicilian Defense

1.e4 c5 2.♟f3 ♞c6 3.d4 c×d4  
4.♞×d4 ♟f6 5.♞c3 d6 6.♞e2 e5

This reminds us of Black's 14th move in the previous game (after Diagram 21). Black surrenders control of the

important square d5. This gives White a powerful hold on the center and foreshadows a serious lack of mobility on Black's part.



23

*White intends to train his guns on the weakness created by Black's last move.*

7.♟f3 h6 8.♞e3 ♞e6 9.0-0 ♞e7  
10.♞d2 d5?\*

In his anxiety to get a free hand in the center, Black advances forthrightly to get rid of White's control of the d4-square.

*Strategically* the advance is irreproachable. It has, however, the drawback of provoking a lasting attack by White.

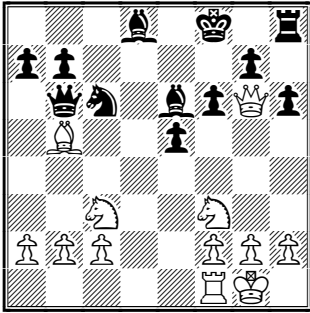
11.e×d5 ♞×d5 12.♞b5!

By pinning Black's knight White threatens ♞×e5. This forces once concession after another by Black.

## How to Exploit Black's Premature Opening Up of the Position

12...f6 13.♖ad1 ♜×e3 14.♝×e3  
♞b6 15.♞d3 ♜d8 16.♞g6+ ♔f8  
17.♞×d8+ ♜×d8

If 17...♜×d8?? 18.♞e8#. If 17...♞×d8  
18.♜xc6 b×c6 19.♜×e5 wins a pawn.



24

*White is operating with brilliant tactical threats.*

18.♜×e5! ♜c7

White's threats cannot be met satisfactorily: If 18...♜×e5?? 19.♞e8#. If 18...f×e5 19.♞×e6 and White has a winning game.

19.♜d5! Black resigns.

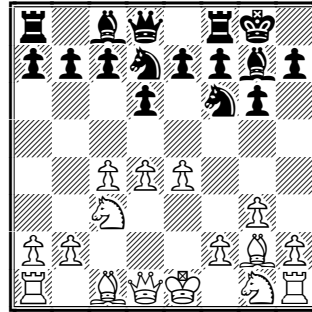
A magnificent winning move. If 19...♞×b5 20.♜×c7 attacking Black's queen and also threatening 21.♞e8#.

If 19...♜×d5 20.♜d7+ winning Black's queen. Thus White faultlessly exploited Black's premature opening up of the position.

In the following game Black is strangely inconsistent. First he drifts listlessly into a critically cramped position; then, with equally poor judgment, he strikes out recklessly to achieve freedom. White hits back hard.

White – Black  
King's Indian Defense

1.d4 ♜f6 2.c4 g6 3.♜c3 ♜g7 4.e4  
d6 5.g3 0-0 6.♜g2 ♜bd7



25

*White's pieces are likely to have more mobility than Black's forces.*

7.♜f3 e5 8.0-0 h6 9.h3 ♝h7  
10.♜e3 ♜g8 11.♞c2 ♜b6 12.b3  
f5?

Dissatisfied with the slight scope of his forces, Black opens up the position violently. *But White, having much greater mobility, reacts with brutal effectiveness.*

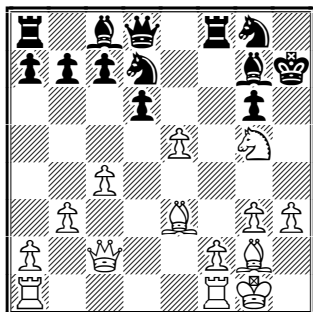
What makes White's reaction all the more powerful is that Black has loosened up the pawn position in the vicinity of his king. The result is that it is relatively easy for White to penetrate the black king's defenses.

13.d×e5 f×e4 14.♜×e4 ♜d7?

Black takes advantage of the fact that White's e-pawn is pinned on the long diagonal. But this is trifling compared to White's smashing attack against Black's weakened kingside.

15.♜eg5+! h×g5 16.♜×g5+ Black resigns.

## Attack and Counterattack in Chess



26

*White scores a decisive win of material no matter how Black replies.*

If 16...♖h6 White wins the black queen with 17.♗f7+ or 17.♗e6+. If instead 16...♖h8 17.♙xg6 ♗df6 18.exf6 ♗xf6 19.♗f7+ ♖xf7 20.♙xf7 and White is two pawns and the exchange ahead. In the face of this crushing material advantage, Black resigns.

In this game White profited by Black's cramped game in the opening. Later on, when Black tried to struggle out of his straitjacket, White opened effective lines for his action-greedy pieces.

In the next game Black has a satisfactory opening position, but by thoughtlessly opening up the game he exposes himself to a decisive attack. Again White is alive to the possibilities, and quickly works up a withering attack.

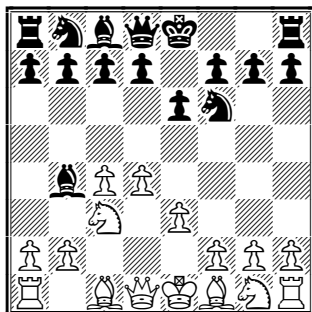
### White – Black

Nimzo-Indian Defense

**1.d4 ♗f6 2.c4 e6 3.♗c3 ♖b4 4.e3**  
(27)

**4...0-0 5.a3 ♗xc3+ 6.bxc3 ♞e8**  
**7.♗e2 e5 8.♗g3 d6 9.♗e2 ♗bd7**

There is a clash of plans here. As in Diagram 6, White wants to open up the position so that his bishops will have



27

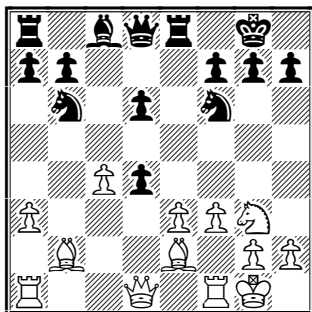
*In this seemingly conservative variation White's bishops have enormous potential power.*

powerful play. Black, on the other hand, should strive to keep the position closed.

### 10.0-0 c5 11.f3 cxd4?

This sadly inconsistent move opens up a future for White's dark-square bishop.

### 12.cxd4! ♗b6 13.♗b2 exd4?



28

*White's dark-square bishop has come to life!*

White has been on the alert to increase the scope of his bishops. He is well aware that Black has gone completely astray with his 11th and 13th moves.

The position is opened up for White's pieces, and this is particularly true of White's dark-square bishop. As you will



## How to Exploit Black's Premature Opening Up of the Position

see, White knows just how to derive the maximum benefit from this.

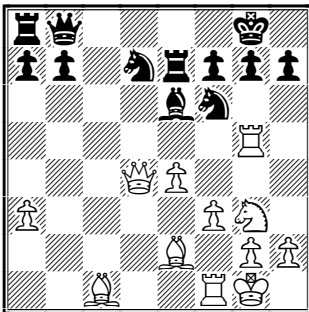
**14.e4! ♖e6 15.♞c1 ♞e7 16.♚×d4 ♚c7 17.c5!**

As a result of White's masterly 14th move he has created a magnificent diagonal for his dark-square bishop and powerfully centralized his queen at d4.

Thus White is supreme in the center and in the general mobility of his forces. All this may be traced back to Black's mistake in prematurely opening up the position on move 11.

With his last move White increases his mobility and prepares to switch a rook to the kingside. This will lead to a surprisingly quick decision.

**17...d×c5 18.♞×c5 ♚f4 19.♖c1! ♚b8 20.♞g5! ♖bd7**



29

*White is ready for a bombshell finish.*

**21.♞×g7+!! ♚g7 22.♖h5+ ♚g6**

Or 22...♚h8 23.♖×f6 ♚e5 24.♖b2! ♚×d4+ 25.♖×d4 ♖×f6 26.♖×f6+ winning a rook.

**23.♚e3! Black resigns.**

White has foreseen that Black will be helpless against the double threat of

24.♚h6# or 24.♚g5#. He has made Black pay a high price for prematurely opening up the position.

The next game shows a still further refinement of this type of mistake. Black prematurely opens up the position for his opponent without even seeking any real or imaginary compensation. White's resulting attack, as we might expect, is devastating.

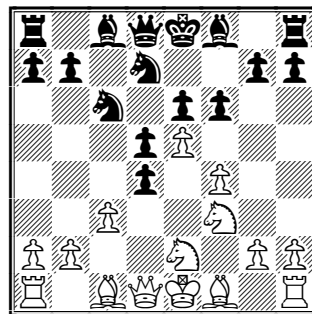
**White – Black**  
French Defense

**1.e4 e6 2.d4 d5 3.♖c3 ♖f6 4.e5 ♖fd7 5.♖ce2 c5 6.c3 ♖c6 7.f4 f6 8.♖f3 c×d4?**

The very nature of this opening gives White a much freer position. His pieces have more scope, and Black's light-square bishop is hemmed in for good.

However, White does not have a completely free hand; Black is keeping the white center under pressure by attacking it with his f-pawn and c-pawn.

Since this is all the pressure that Black has, he ought to increase it by playing 8...♚b6. By keeping White's center under observation, Black would distract White's attention from his attacking intentions.



30

*White is now greatly relieved as Black deprives himself of his only counterplay.*