

# Contents

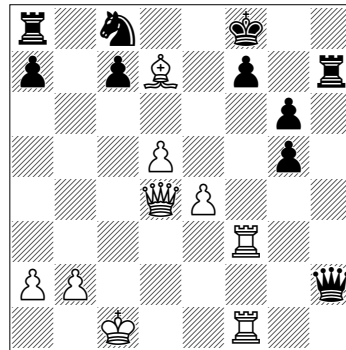
Introduction	4
Symbols	4
<b>Michael Adams: 100 amazing positions to inspire and entertain</b>	<b>5</b>
25 Warm-Ups	6
25 Easy Puzzles	18
25 Medium Exercises	31
25 Hard Challenges	46
<b>John Nunn: 100 exercises to sharpen your skills</b>	<b>65</b>
25 Clear Tactics	66
25 Tricky Decisions	78
25 Tough Puzzles	93
25 Advanced Tactics, Endings and Studies	110
<b>Graham Burgess: 100 spectacular and instructive puzzles, with themed sections</b>	<b>132</b>
25 Fun Puzzles	135
25 Opening Themes	150
25 Defensive Tasks	166
25 Hard Cases	187
<b>Wesley So: 100 world-class puzzles to instruct while providing hours of solving pleasure</b>	<b>208</b>
25 Fairly Easy Puzzles	209
25 Tricky Positions	224
25 Difficult Exercises	244
25 Complex Cases	269
Solutions to Extra Puzzles	301
Index of Composers and Players	308
About the Authors	319

**Puzzle 62: White to play**

David Howell – Ivan Sokolov

*London 2009*

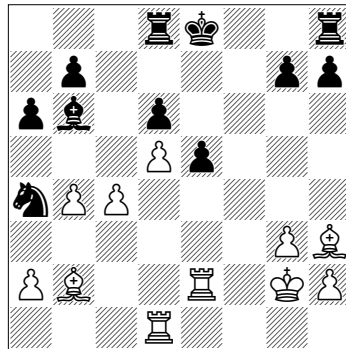
I really like this puzzle and haven't seen any with similar ideas. I asked David about this afterwards and despite being a keen puzzle solver himself, he also wasn't familiar with the concept. Nonetheless, at the board he had no problems finding the correct solution; can you do the same?

**Puzzle 63: White to play**

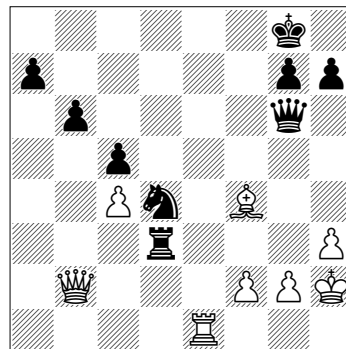
Aleksandr Betaneli – Michael Song

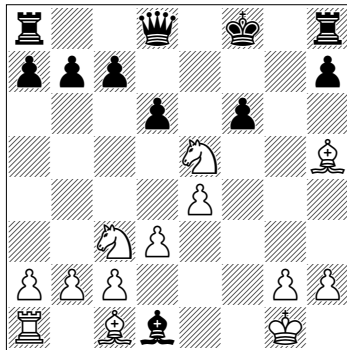
*Toronto 2010*

Black is aiming to swap the bishop on b2. How should White react to this?

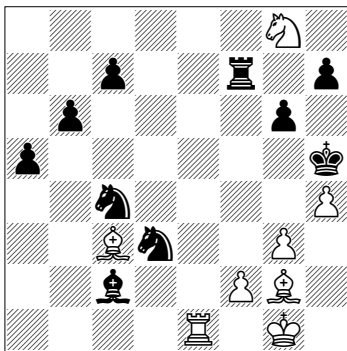
**Puzzle 64: Black to play**Ivan Morović Fernandez –  
Sergei Rublevsky*FIDE World Cup, Khanty-Mansiisk 2009*

Black is a pawn up with well-placed pieces, but his king could prove a little exposed if the game drags on. How did Rublevsky finish crisply?

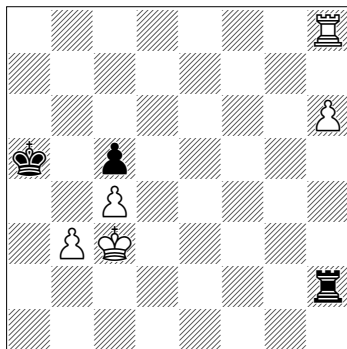


**Puzzle 65: White to play****Johannes Zukertort – NN***Leipzig (blindfold simul.) 1877*

A typical rollicking nineteenth-century game. Zukertort played this game blindfold, but still mated his opponent handily with his rampant minor pieces. How exactly did he achieve this?

**Puzzle 66: White to play****Maxime Vachier-Lagrave –****Jon Ludvig Hammer***Stavanger blitz 2015*

Black has two extra pawns, but his king is very awkwardly placed. How did MVL exploit this?

**Puzzle 67: Black to play****Tigran Gharamian – Romain Edouard***French Ch (rapid playoff), Nîmes 2018*

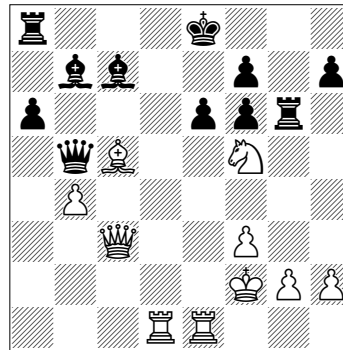
I watched this exciting tiebreak game that decided the French Championship online. With both players having only seconds remaining, matters were developing rapidly. However, I managed to spot an unlikely save for Black as the moves flashed by. What is it?

**Puzzle 68: White to play**

**Alexander Moiseenko –  
Stanislav Bogdanovich**

*Russian Team Ch, Olginka 2011*

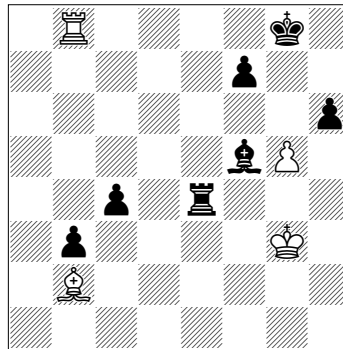
Is 28 ♖xf6 a good idea here, or should White look for another way to continue the attack?

**Puzzle 69: Black to play**

**Csaba Berczes – Tamas Banusz**

*Zalakaros 2010*

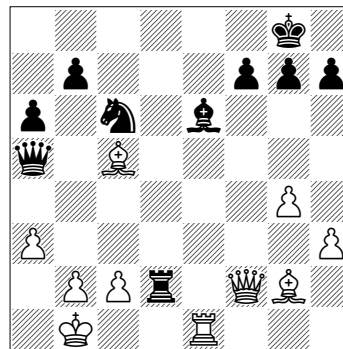
Black has a lot of extra pawns, but his king is in danger. What is the best move and the assessment of the position?

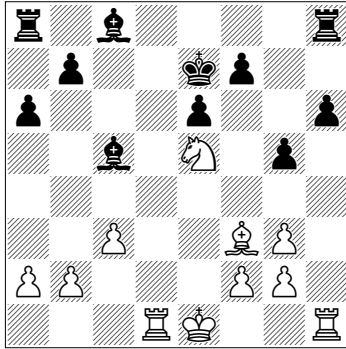
**Puzzle 70: White to play**

**Michael Adams – John Nunn**

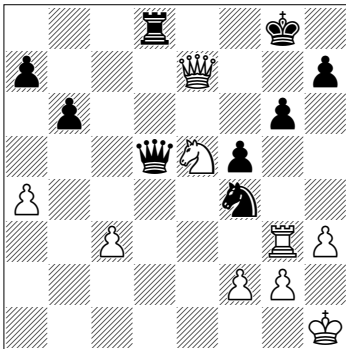
*European Internet Ch blitz 2003*

John has just moved his rook to its seventh rank. Why was this not a good idea?

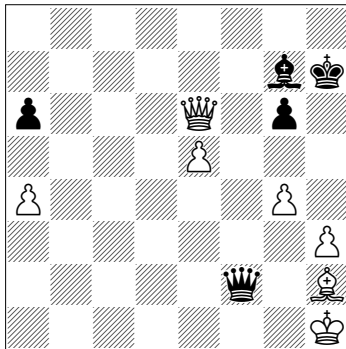


**Puzzle 71: White to play****Michael Adams – Vladimir Akopian***Moscow (team event) 2004*

Black's development is lacking here, but is there a way to exploit this immediately?

**Puzzle 72: White to play****Michael Adams –****Ehsan Ghaem Maghami***Turin Olympiad 2006*

Black's kingside looks a bit open, but there is only one move to take advantage of the situation. What is it?

**Puzzle 73: Black to play****Robert Hungaski – Michael Adams***Los Angeles 2011*

I only needed a draw to win the tournament, and there are plenty of ways to secure that result. Is there any reason to look for more here?

After 29...♖xf7 White can force mate with 30 ♖e8+! (30 ♖xf7+ ♕xf7 31 ♖xh2 also wins) 30...♔d6 31 ♖e6+ ♕c5 32 ♖c6+ ♔d4 33 ♖c3+ ♕xe4 34 ♖e1+ ♕xd5 35 ♖c6+ ♔d4 36 ♖e4+ ♔d3 37 ♖c4#, while after 29...♔d6 the quickest finish is 30 ♖f6+ ♕c5 31 ♖c3+ ♔d6 32 ♖1f6#.

**Solution 63**

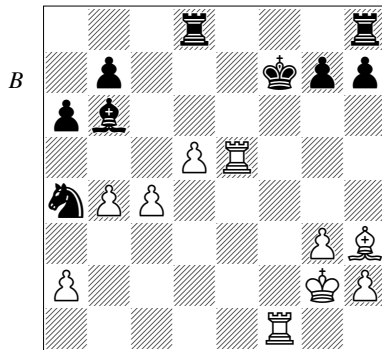
25 ♕xe5!

Once the knight has been sidelined, this sacrifice runs like clockwork.

25...dxe5

Now White just has to keep on giving check to corner Black's king. 25...0-0 at least avoids mate, but after 26 ♕a1 White has an overwhelming advantage with the extra pawn and dominating bishop-pair.

26 ♖xe5+ ♕f7 27 ♖f1+



27...♕g6

Or 27...♕g8 28 ♕e6#.

28 ♖e6+ ♕h5 29 ♖f5+ g5 30 g4+ 1-0

Black resigned since it is mate after 30...♕h4 31 ♖h6#.

**Solution 64**

39...♖xh3+! 0-1

White resigned because if the rook is captured, it is either mate, or the rook is regained with interest: 40 gxf3 (40 ♕xh3 leads to a neat mate: 40...♖h5+ 41 ♕g3 ♕f5#) 40...♕f3+ 41 ♕h1 ♕xe1, threatening ...♖g2# and ...♖e4+.

**Solution 65**

13 ♕h6+! ♕e7

13...♕g8 allows mate by 14 ♕f7#.

14 ♕d5+ ♕e6 15 ♕f7+ ♕xe5 16 c3! 1-0

After a series of checks now is the moment to draw breath, and take time out for a classy quiet move. Black called it a day in view of the inevitable 17 ♕f4#.

**Solution 66**

31 ♖e7!

Luring away the only defender.

31...♖xf2

After 31...♖xe7, 32 ♕f3# snares the black monarch.

32 ♕h3!

Another key move, preventing the king from running. After the mistake 32 ♖xh7+? ♕g4, matters are far from clear.

32...h6 33 ♖h7! 1-0

The cleanest. Black resigned as ♖xh6# can't be delayed for long.

**Solution 67**

The game continued with the mistake 58...♖h3+? and White later won after various adventures.



Black's bishop and king are both insecurely placed.

**23...♙e3**

Or: 23...♖c8 24 ♜xc8 ♜xc8 25 ♜xh6; 23...♙d6 24 ♜c4+ ♟f5 25 ♜f7.

**24 ♜c4+ ♟d5 25 ♜h5! 1-0**

Black resigned due to **25...♜xg2 26 ♜g4+! ♟xc4 27 ♜xe3+ ♟d3 28 ♜xg2**.

### Solution 72

**33 ♜f7!**

The threat of ♜h6+ is amazingly strong.

**33...♞d1+**

After 33...♞xf7 34 ♞xd8+ ♞f8 (34...♟g7 35 ♞d4+) 35 ♞d2 ♜e6 36 ♜d3 White wins easily.

**34 ♟h2 1-0**

Black is mated after **34...♜e2 35 ♜h6+** (35 ♞xd8+ is also good enough) **35...♟h8 36 ♞e5#**.

### Solution 73

**41...♞f1+!**

Forcing the bishop to a poor square.

**42 ♙g1 ♞f3+!**

42...♞xh3+? is much less impressive: Black should leave the pawn on h3 as it will trap White's king. 43 ♙h2 ♞f1+ 44 ♙g1 ♞f3+ 45 ♟h2 ♞e2+ and now with 46 ♟h3 the king uses this key flight-square.

**43 ♟h2 ♞e2+ 44 ♟h1**

Or 44 ♟g3 ♙xe5+ 45 ♟h4 ♞e1+! (45...♙g3+ wins the queen) 46 ♟g5 ♞d2+ 47 ♟h4 ♞h6#.

**44...♞e4+! 0-1**

White resigned as my queen has got to the perfect square. Now **45 ♟h2 ♙xe5+** costs White his queen.

### Solution 74

**21...♙d3+!** forced resignation. The line continues **22 ♞xd3 ♞h3+ 23 ♟g1 ♜e1+! 24 ♜xe1 ♙xh2+ 25 ♟h1 ♙g3+! 26 ♟g1 ♞h2+ 27 ♟f1 ♞xf2#** and my last two pieces have got the job done.

### Solution 75

**22...♜h2!**

Creating room for the queen on g4, and threatening ...♞h3#.

**23 ♙e3**

After 23 ♜xh2 a series of checks drives the king to his doom: 23...♞g4+ 24 ♟f1 ♞g1+ 25 ♟e2 ♞xh2+ 26 ♟d3 ♜d8+ 27 ♜d6+ ♜xd6+! 28 exd6 ♞g3+ 29 ♟d2 ♞e3+! 30 ♟d1 ♙g4+ 31 ♞e2 ♞xe2#.

**23...♞h3+ 24 ♟g1**

24 ♟f2 ♞f3+ 25 ♟g1 (25 ♟e1 ♙b4+ 26 ♙d2 ♞xh1+) 25...♙xc4! leads to total collapse: 26 ♙xc5 (26 ♟xh2 ♙xe3 27 ♞xc4 ♟e7 leaves White without a good check and ...♜h8# menaced) 26...♞g3+ 27 ♞g2 ♜f3#.

**24...♙xc4! 25 ♜xh2**

Or 25 ♙xc5 ♞g3+ 26 ♞g2 ♜f3#.

**25...♞xe3+ 26 ♟h1**

26 ♟g2 is met by 26...♙d3.

**26...♙d3! 0-1**

White resigned as 27 ♞g2 ♙xe4 paralyses White's queen and 27 ♜h8+ ♟e7 doesn't help.