

Efstratios Grivas

# MONSTER

YOUR ENDGAME

# PLANNING

VOLUME 2



Chess  
Evolution

Cover designer  
Piotr Pielach  
Monster drawing by Ingram Image

Typesetting  
i-Press <[www.i-press.pl](http://www.i-press.pl)>

First edition 2019 by Chess Evolution

*Monster your endgame planning. Volume 2*  
Copyright © 2019 Chess Evolution

All rights reserved. No part of this publication may be reproduced, stored in a retrieval system or transmitted in any form or by any means, electronic, electrostatic, magnetic tape, photocopying, recording or otherwise, without prior permission of the publisher.

ISBN 978-615-5793-16-5

All sales or enquiries should be directed to Chess Evolution  
2040 Budaors, Nyar utca 16, Magyarorszag

e-mail: [info@chess-evolution.com](mailto:info@chess-evolution.com)  
website: [www.chess-evolution.com](http://www.chess-evolution.com)

Printed in Hungary

# TABLE OF CONTENTS

Key to symbols.....	5
Foreword .....	7
The Endgame.....	11
The Golden Rules of the Endgame.....	15
Evaluation — Plan — Execution .....	17

## CHAPTER 1. UNBALANCED MATERIAL ENDINGS – QUEEN

Queen vs Bishop Pair .....	21
Queen vs Knight Pair .....	39
Queen vs Rook & Bishop.....	55
Queen vs Rook & Knight.....	73
Queen vs Rook(s).....	87

## CHAPTER 2. UNBALANCED MATERIAL ENDINGS – ROOK

Rook vs Bishop .....	107
Rook vs Knight .....	123
Rook vs Two Pieces (Bishop & Knight).....	139
Rook vs Two Pieces (Bishop Pair) .....	153
Rook vs Two Pieces (Knight Pair) .....	169

## CHAPTER 3. VARIOUS ENDINGS

Opposite-coloured Bishops.....	187
The Lucena Position.....	205
The Philidor Position.....	219
Index of Games.....	233
Index of Openings (ECO Classification) .....	237



# KEY TO SYMBOLS

=	Equality or equal chances
±	White has a slight advantage
∓	Black has a slight advantage
±	White is better
∓	Black is better
+−	White has a decisive advantage
−+	Black has a decisive advantage
∞	unclear
∞	with compensation
↔	with counterplay
↑	with initiative
→	with an attack
Δ	with the idea
□	only move
N	novelty
!	a good move
!!	an excellent move
?	a weak move
??	a blunder
!?	an interesting move
?!	a dubious move
+	check
#	mate

The 'Rule of the Three Weaknesses'  
can be helpful to evaluate nearly any endgame:

1. One weakness = slightly better ( $\pm$ ).
2. Two weaknesses = clearly better ( $\pm$ ).
3. Three weaknesses = winning (+-).

Remember this important rule;  
it will help you to make the correct decisions,  
even when you are still in the middlegame — in the endgame for sure!

# FOREWORD

The MYEP series offer training on a vital subject, the choice of the ‘best’ available endgame plan. As is commonly accepted, a correct Evaluation of the position, a strong Plan and an accurate Execution are the three important factors that separate ‘the expert from the amateur’.

In a way, efficient training on the three above mentioned concepts can help a chess player mature and lead him to new successful paths.

The today Author has at his disposal powerful databases, tablebases, analysed material, books and by adding his knowledge, you will get what you are looking for!

The endgame is the phase of the game that it has been extensively analysed and formed to concrete conclusions, although in nearly all the books I do know, very little space is dedicated to forming plans.

I think this is because of space limitations and because it’s a difficult theme that doesn’t look too interesting for the readers. But a modern chess player cannot really choose what he likes or prefers — this has nothing to do with openings!

Today we have shorter time-controls and there isn’t really enough time to dig on the subtleties of each ending.

You have to know and to repeat knowledge; don’t be carried away by the usual myth of the ‘chess talent’. As I repeatedly wrote and proved ‘talent is the excuse of the failed’.

‘Unfortunately’, the modern chess player is entitled and forced to work more than his predecessors. The modern chess trainer as well needs to prepare more delicate themes, understand them and teach them as well to his students. So, there is plenty of room for everything and for everybody who is thirsty for knowledge.

Knowledge is the key word. And knowledge is absorbed sub-consciously; it is impossible to remember everything you study. So, it is highly important to work with good material and good trainers in order to improve and get higher in the Chess Olympus Mountain.

Nowadays the help of the Silicon Monster (chess analysis engines) is quite valuable, as it can save an author countless hours of analysis and checking. But still the role of the qualified

trainer remains important; he knows where the truth is — he knows what to keep and what to throw away...

I do not like to claim that everything I wrote is perfect and completely sound; I always think of the surprise factor; I just try to present my thoughts honestly and with responsibility.

## HOW TO DEAL WITH THE BOOK

Back in 2007 I published my first English language book on planning (Modern Chess Planning — Gambit), which was later translated and published in the Greek, Spanish and Iranian languages, making it a best-seller. In 2019 I published a two-volume series called ‘Monster Your Middlegame Planning’ and now it was time to do the same on the Endgame! All four books are published by ‘Chess Evolution’.

The format is the same as in MYMP, with 13 thematic chapters, where in each of them 6 tests are included (in each volume). Each theme is analysed by modern concepts and tips, which will drive the reader to the right path. For me solving the tests is not the most important feature. Understanding them and learning how to do the job in an over-the-board game is far more important and what counts at the end of the day!

With this book-series I have sought to provide a training guide that will be helpful mostly to players in the 1500–2200 range — corresponding to a lower club level up to those with aspirations for a FIDE title.

Of course, the books may well also be useful for players weaker than 1500, or for those stronger than 2200, but this is a decision these players should make for themselves!

In this book there are 78 tests, each based around a game. In each of these tests, the starting point is the first diagram. There is an evaluation of the diagrammed position, which helps the reader to understand some important facts about the position itself.

A presentation of three possible plans follows. Then the reader must decide which is the most valuable/best plan. The best plan receives a maximum of 50 points. The other, less good, bad or indifferent plans normally receive some points or none at all, depending on their actual value and correctness. Some of the plans receive no points at all; they are just bad!

After completing the work on each test, the reader must take a look at the solution, where he can find the answers. In the solutions, the game is analysed until its end, so the reader can better understand why the rewarded plan was the ‘best’ in the position and how it worked out. There are a few examples where the best avail-



able plan was overlooked, but these are exceptions and the games are nevertheless quite interesting.

By this point, you will have received some very good training. But then, it will do no harm to measure your 'strength' on this subject. The maximum score is 3.900 points and you should divide your total score by 1.5:

Total Points	Planning Strength
2400–2500	Grandmaster
2300–2399	International Master
2200–2299	FIDE Master
2000–2199	Candidate Master
1800–1999	National Master
1600–1799	National A' Category
1400–1699	National B' Category
1200–1399	National C' Category
0–1199	Should try harder!

As one might notice from the score-table, expectations are a little higher than usual for the categories listed, as in this book the evaluation of the position is given by the author beforehand, and this is a great help for the reader. A correct evaluation of any position is one of the most significant factors in chess, but that could be the subject for another book.

It is now time for you to work and train on that important chess concept, the plan. Have fun and train well!

Sharjah, 2019  
Efstratios Grivas

## ACKNOWLEDGMENT

I would like to thank Mr. Manolis Kotsifis for being the first tester and proofer of the book, advising me with some important thoughts and suggestions.

## DEDICATION

This series is dedicated to my parents, Father Georgios Grivas, who died on 2010 and Mother Katina Griva-Bouli, who died on 2015. Finally I understood what means to be an orphan...

# THE ENDGAME

150 years ago the quality of played end games was quite low, as chess-players were reaching it quite rarely!

As strategy and manoeuvres were starting to overcome tactics, more and more endgames were suddenly seen. So, a need for endgame material was essential.

'Basic Chess Endings' (abbreviated BCE) is a book on endgames which was written by Grandmaster Reuben Fine and originally published on October 27, 1941.

It is considered the first systematic book in English on the endgame phase of the game of chess. It is the best-known endgame book in English and is a classic piece of chess endgame literature.

The book is dedicated to World Champion Emanuel Lasker, who died in 1941 (the year the book was published). It was revised in 2003 by Pal Benko.

'Basic Chess Endings' was written by Reuben Fine in only four months and was published in 1941 by McK-

ay (a division of Random House) in hardback. The book used the now obsolete descriptive chess notation and used the old system of using the abbreviation 'Kt' to stand for knight instead of the more modern 'N'.

In a 1984 interview, Fine said that it took him three months to write the book. He said that organising the material gave him no trouble, but it was hard work coming up with example positions. He created many of the examples.

There was a Hardback Limited Edition of 500 signed by Ruben Fine sold by USCF in the 1940s. The hardback edition was reprinted at least as late as 1960. The copyright was renewed in 1969 as the book went through many paperback impressions. It went through ten printings in paperback by 1981.

The original book contains 573 pages and 607 diagrams of positions. Many other positions were given by listing the location of the pieces rather than showing a diagram. The 2003 revision contains 587 pages with 1330 positions, most with diagrams.

Of course many other good books followed, mainly those of Yuri Averbakh, Vasily Smyslov and Paul Keres. But all of them had some analysis flaws as well — it was rather difficult to be accurate...

## COMPUTER EVOLUTION

The computers' evolution changed everything in the way we learn and analyse endgames today, at least in some important degree.

Nowadays chess players have access to many good and accurate endgame books, mainly because of the tablebases, which changed our endgame vision.

These tablebases contain the game-theoretical value (win, loss, or draw) of each possible move in each possible position, and how many moves it would take to achieve that result with perfect play.

Thus, the tablebases act as an oracle, always providing the optimal moves. Typically, the database records each possible position with certain pieces remaining on the board, and the best moves with White to move and with Black to move.

Tablebases are generated by retrograde analysis, working backwards

from a checkmated position. By 2005, all chess positions with up to six pieces (including the two kings) had been solved — this is what we call today the Nalimov Tablebases.

The tablebases of all endgames with up to six pieces are available for free download, and may also be queried using web interfaces. They require more than one terabyte of storage space.

By August 2012, tablebases had solved chess for every position with up to seven pieces (the positions with a lone king versus a king and five pieces were omitted because they were considered to be 'rather obvious') — this is what we call today the Lomonosov Tablebases. The size of all tablebases up to seven-man is about 140 TB.

The solutions have profoundly advanced the chess community's understanding of endgame theory.

Some positions which humans had analysed as draws were proven to be winnable; the tablebase analysis could find a mate in more than five hundred moves, far beyond the horizon of humans, and even beyond the capability of a computer during play.

For this reason, they have also called into question the 50-move rule since many positions are now seen to exist that are a win for one side but would be drawn because of the 50-move rule.

Tablebases have enhanced competitive play and facilitated composition of endgame studies. They provide a powerful analytical tool.

Of course we can expect the 8-pieces version but I feel that it will be a bit delayed!

Chess players tend to think that theory only applies to openings. This is a very wrong attitude, as logic and practice have proven that theory counts for every part of a game.

## ENDGAME THINKING

‘To learn and to play endgames well the chessplayer must love endgames’ — Lev Psakhis.

Different kinds of endgames have specific characteristics and rules. Every serious player must know many typical positions and main principles of all types of endings.

That knowledge should help us during the game, but it is not enough to be a good player, not yet. There just too many different endings, some of them with two or more pieces, some very complex.

To be comfortable and play well those complex endings requires specific knowledge and specific ways of thinking. We will call it ‘endgame thinking’.

First of all we will separate endgames into two categories:

### SOS Tip 1 — Endgame Categories

1. Tactical — Tactical complex endgames must be treated as a middle-game.
2. Strategic — Pure Endgames.

As in the middlegame our thoughts are busy with calculation based on the specific characteristics of the position.

But more often in our games, as practice proves, we have so-called strategic endgames; the endgames where even computers have difficulties to find the best move. These are the endgames that do not rely on calculation.

It is known from the time of Jose Raul Capablanca that in strategic, positional endgames we have to think by plans, schemes. Variations and calculation plays a secondary role.

First we have to understand where to put our pieces; to find an idea for improving position. After, we start to form a plan. This is what we call ‘endgame thinking’.

Thinking correctly, in the right order, will significantly simplify the process of calculation...

**SOS Tip 2 — Endgame Thinking**

1. Piece placement.
2. Plan forming.
3. Do not rush!

So, how to approach ‘endgame thinking’, how to switch the right button in our brain. The Russian master Sergei Belavenets, great chess thinker, gives the following great advice:

‘After tactical complications, when our brains have been busy with calculation of beautiful variations, the exchange of pieces might follow, and some kind of prosaic endgame arises...

Every player has to spend a few minutes, if the clock allows, just to relax, and to calm down your emotions in order to look differently at the position. This investment of time will pay back later in the game.

I am well aware that this advice was given before World War II, when they had very different time controls.

So do not waste your time, just switch on the button in your brains, just remember that positional endgames require ‘endgame thinking’ by schemes, by plans.

And do not forget to respect your opponent’s ideas. The art of endgame play is how to achieve your plan and subdue the opponent at the same time. And this series is here to help understand it!

# THE GOLDEN RULES OF THE ENDGAME

The endgame is the moment of truth. It is the phase of the game where we will try to reap the seeds of our effort, regardless of whether that is the full point of victory or the half point of the draw.

In the endgame the significance of errors increases, as the opportunities for correcting them are few.

The following rules are considered to be the Golden Rules of the Endgame. They were recorded by GMs **Reuben Fine** and **Pal Benko**, two of the world's greatest experts in this field:

1. Start thinking about the endgame in the middlegame.
2. Somebody usually gets the better deal in every exchange.
3. The king is a strong piece: Use it!
4. If you are one or two pawns ahead, exchange pieces but not pawns.
5. If you are one or two pawns behind, exchange pawns but not pieces.
6. If you have an advantage, do not leave all the pawns on one side.
7. A distant passed pawn is half the victory.
8. Passed pawns should be advanced as rapidly as possible.
9. Doubled, isolated and blockaded pawns are weak: Avoid them!
10. The easiest endings to win are pure pawn endings.
11. Passed pawns should be blockaded by the king, the only piece that is not harmed by watching a pawn is the knight.
12. Two bishops vs bishop and knight constitute a tangible advantage.
13. Bishops are better than knights in all except blocked pawn positions.
14. Do not place your pawns on the colour of your bishop.
15. The easiest endings to draw are those with bishops of opposite colours.
16. Rooks belong behind passed pawns.
17. A rook on the seventh rank is sufficient compensation for a pawn.
18. Not all rook endings are drawn!
19. Perpetual check looms in all queen endings.
20. Every move in the endgame is of the utmost importance because you are closer to the moment of truth.

Of course there are plenty of other guidelines for dealing with the end-game. One of them goes as:

1. Activate you king.
2. If you have more pawns than your opponent, exchange pieces not pawns.
3. If you have fewer pawns than you opponent exchange pawns not pieces.
4. Try to create a passed pawn.
5. Protected passed pawns are very strong.
6. Outside protected passed pawns are usually decisive.
7. Try to promote a passed pawn.
8. If your opponent has a passed pawn, try to blockade that pawn.
9. Bishops are generally stronger than knights.
10. Bishops of opposite colour increase the chances of a draw.
11. Be aggressive with your rooks; if you choice is between defence and counter-attack, always counter-attack.
12. Rooks belong behind passed pawns.
13. Know the basics.



# EVALUATION – PLAN – EXECUTION

The most important element in modern chess practice is probably correct planning. The plan is associated with evaluation and execution, three valuable concepts that cannot be separated and which most of the time determine the fate of our positions.

During my training sessions I do ask from my trainees the famous EPE procedure, as below:

<b>SOS Tip 1 — EPE</b>
1. Evaluation (strategical & tactical)
2. Plan (ours and our opponent's)
3. Execution (calculation & move)

That's the right order, although many trainers/authors do not really follow it — they prefer to teach first to move and then to think. With this way they have some success but they will never have a GM or a player near such strength.

Chess is a mind game — it asks you to think to find solutions, even if these solutions are more or less obvious.

In every position you must know where you are (evaluation), where you want to go (plan) and how you will go there (execution). So simple, but we tend to forget this procedure in the heat of the battle.

Nowadays, chess games between decent players are full of small plans of different types and ideas, based on purely strategic and tactical motives. The one who will evaluate, plan and execute better than the opponent earns the first option to win the game.

A closer examination of games played between strong players will prove that there is some harmony among their moves, some central idea that guides the movements of their forces. This is what we call a plan. A good chess player refuses to act without any plan, even if this plan sometimes turns out to be mistaken in the long run.

First of all, it is important to identify the most important strategic and tactical elements of each particular position. According to the needs of that certain position, we should create our

plan and stick to it. Games where only one plan is used are rarely seen these days. We are usually obliged to create several small plans, which of course are just parts of our main goal: winning!

Many weak players are not able to construct an acceptable plan. This has nothing to do with intelligence, but just with basic chess education. Nowadays, with so many books, electronic help and trainers available, anything can be learned and, by constant practice, it can be understood and assimilated. Without basic chess education and knowledge we can't go very far. So, the first step is to understand the basic strategic and tactical elements that govern our game.

Plans are necessary and can be found in every phase of a chess game. From the early opening till the late endgame, chess players create the necessary plans, derived from such varied factors as the occupation of an important square to an aggressive attack.

More common are the plans we draw right after the end of the opening phase, but this is of course not

the rule. Nowadays, with the opening theory having gone very far, the choice of a certain opening very much depends on a plan we would like to use!

Some general advice could be presented to the reader as follows:

#### SOS Tip 2 — Planning

1. Notice and understand the main merits and disadvantages of each side.
2. Notice the immediate threats of both sides, but especially of your opponent!
3. Determine what is (are) the main, most significant target(s) and how the plan should be executed.
4. Examine what will be the opponent's reaction to your plan.
5. Examine what your opponent's possible main plan is (can be) and how you should react to it.
6. If you can choose among two or more good plans, opt for the one that you think can bring most benefits.
7. Follow your plan. Do not change it without a really good reason.

# **CHAPTER 1.**

## **UNBALANCED MATERIAL ENDINGS – QUEEN**



# QUEEN VS BISHOP PAIR

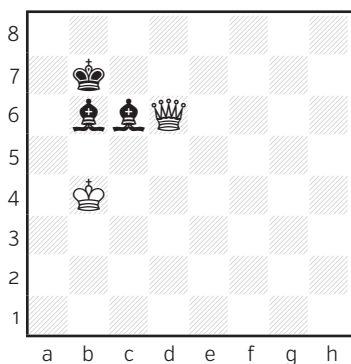
Two bishops, curiously enough, are almost never able to draw against a queen, although the winning process is often complicated and requires many dozens of moves.

The only drawing position was discovered as early as the 18<sup>th</sup> century:

## EXAMPLE

▷ **Lolli Giambattista**

Study 1763



1. ♖e7+ ♔c8 2. ♖e6+

In case of 2. ♖d6 ♔b7 3. ♔c4, Black should play 3... ♕a7! (3... ♕c7?, loses to 4. ♖e7 ♔b6 5. ♖b4+ ♔a6 6. ♔c5+-) 4. ♖e7+ ♔b8, with the idea ... ♕b6=, or even 4... ♔b6=.

2... ♔b7 3. ♖d6 ♕a7

3... ♕c7 4. ♖e7 ♔b6= is also playable, as White has no 5. ♖b4+.

4. ♖e7+ ♔b6!

Rather than 4... ♔b8? 5. ♔a5+-.

5. ♖d8+ ♔b7 6. ♔a5 ♕c5!

White is in zugzwang, as every possible move allows the black bishop to return to b6. If White brings his king to e7, the bishop occupies the c7-square, with the same position.

½-½

When there are pawns for both sides, we have a very interesting ending, where the queen usually prevails but things are not so clear-cut or easy, to put it mildly.

With one-side pawns the win becomes quite difficult. The stronger side will have to clear-off the pawn structures and then avoid the above examined 'Lolli Position', in order to prevail.

With pawns on both sides things are easier for the 'queen' side, as the 'bishops' side has to care for the protection of its pawn(s) and this is just an extra headache!

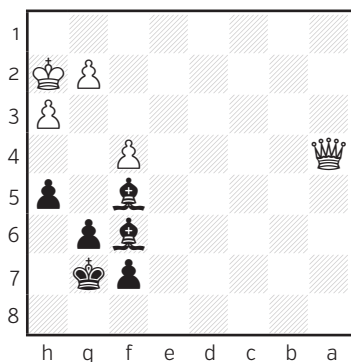
SOS Tip 1 — Ways to Go
1. A passed pawn always helps the strongest side.
2. The strongest side's king should be activated and assist his queen.
3. The 'Lolli Position' is important for both sides.
4. Pawns on both sides help the queen to prevail.
5. When facing pawns on one side, some fortress cases can appear and both sides should be aware of them.

## EXERCISE 1

## PLAN – EXECUTION

- ▷ **Corbet Laurent**  
 ▶ **Lupu Mircea Sergiu**  
**B09** Bourbon Lancy 1998

39. ♔h2



## EVALUATION

Well, surely I am not happy with my position, as I have to defend a lost case, as per endgame theory. White wins in this kind of endings, usually by exchanging all pawns and achieving a won, none ‘Lolli Position’. So, my main object should be to make it difficult for my opponent and try to get the ‘Lolli Position’.

## PLAN A

I think that my best chance is to opt for the direct **39...h4**. Then White should proceed on exchanging pawns: **40.g4 hxg3+** **41.♔xg3 ♕d8** **42.h4 ♕f6** **43.♖b5 ♔h6** **44.♖b6 ♕e6** **45.♖c5 ♔g7** **46.h5 gxh5** **47.♖xh5**. Then he will go f5 and his king will be driven to e8. Of course I will face problems to remain with my bishop on the a2-e6 diagonal, but probably this is my best practical chance.

## PLAN B

Obviously I should opt for the ‘Lolli Position’ as quick as I can, so going directly for pawn exchange by **39...g5** **40.fxg5 ♕xg5**, seems optimal and on the right track.

## PLAN C

Nothing to do but to wait for my opponent to show his hand, so, I will go for **39... ♕e6** **40.g3 ♕f5** **41.♖d1 ♕e6** **42.g4 hxg4** **43.hxg4**, when I will have to play **43...g5**, safely preserving my bishop on the long diagonal, hoping to survive in the end.

Choose Your Plan		
A	B	C

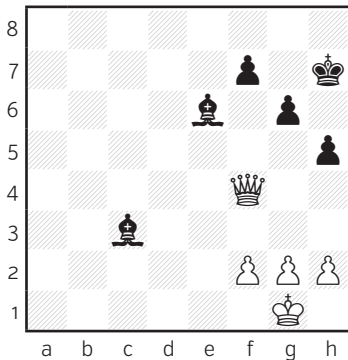
## EXERCISE 2

▷ Polugaevsky Lev

▶ Geller Efim

E74 Skopje 1968

31... ♖c3



## EVALUATION

My position is theoretically won, although not without accuracy, as my opponent's position and pawn structure is healthy without any weaknesses. Pawn breakthroughs and assistance by my king are obligatory concepts in my way to prevail.

## PLAN – EXECUTION

## PLAN A

Advancing my pawns should be my first step. Then I will try some exchanges and not getting the 'Lolli Position'. So, good seems to be **32.h3**, preparing the pawns' advance with g4 and then f4-f5.

## PLAN B

Of course I should advance my pawns to try to get exchanges and in the end the 'Lolli Position', but I should do it in a different way. This is by playing **32.h4**, followed by f3 and g4.

## PLAN C

In such endings the value of the king increases. So, it is important to involve my king into the procedures by activating him. Good to start by the natural **32.♔f1**, trying to get to e8 and create zugzwang positions.

## Choose Your Plan

Choose Your Plan		
A	B	C